

professional development

2009-2010 workshops for arts and classroom teachers



**BOSTON
SYMPHONY
ORCHESTRA**

Education and Community Programs

The Department of Education and Community Programs is pleased to announce its 2009-2010 Professional Development Workshop Series for Arts and Classroom Teachers, featuring an outstanding group of nationally recognized presenters. This year's offerings include an assortment of both technology-based and curriculum-oriented workshops, and, with the submission of a predetermined project, participants are eligible to receive Professional Development Points (PDPs) towards recertification for each session they attend. Any teacher looking either for new ideas to use in the classroom or simply to explore long-standing musical interests will find the right workshop for them here.

Unless otherwise indicated, all workshops are held 9:30am–1:30pm on Saturday mornings at either Symphony Hall or the BSO Education Resource Center (housed at the Boston Arts Academy at 174 Ipswich Street, across the street from Fenway Park). For more information please contact Emilio Gonzalez, Manager of Research and Curriculum Development, at 617-638-9373 or ecgonzalez@bso.org.

Music Technology

Sibelius Notation for Beginners

November 7, 2009 • Presenter: Jay Dorfman • Location: BSO Education Resource Center

Learn how to create beautiful notation, worksheets and arrangements with Sibelius! You'll learn the best way to enter notes with or without a MIDI keyboard and add musical elements to your scores such as lyrics and chord symbols. When you're done, you'll learn the basics of layout and how you can share your scores as PDFs, audio files or Scorch webpages, so that anyone with a web browser can share your music. Intended for first-timers and novice Sibelius users; users of other notation software who are curious about Sibelius are welcome!

Intermediate Sibelius Notation

December 5, 2009 • Presenter: Jay Dorfman • Location: BSO Education Resource Center

Get beyond the basics and learn about advanced playback features, technique text, and all-important tips for layout. Learn to make the most of Sibelius's powerful 'Arrange' feature, and open MIDI files and scan music into Sibelius. Get down and dirty with Engraving Rules to help make your scores look professional and polished, and, most importantly, learn how to use Sibelius more efficiently. A must for anyone who wants to get the most out of Sibelius.

iLife for Music Teachers

February 6, 2010 • Presenter: Jay Dorfman • Location: BSO Education Resource Center

This workshop will focus on the iLife media software suite, including iTunes, iPhoto, GarageBand, iDVD, and iWeb. Learn to import sound from CDs and from microphones, pictures from digital cameras, and video from movie cameras. Using the editing features of iLife, learn to edit media into clips for classroom use. You will also learn to create a video podcast for uploading to a website. These skills can be used in the classroom to share information with parents, publish student work online, and document student performances. Participants should have a basic knowledge of computer use; some experience with digital still and video cameras is helpful but not a prerequisite.



All workshops...

TAKE PLACE on Saturdays from 9:30am–1:30pm.
COST is \$75, except where noted on order form.

Pro Tools for Music Educators

March 6, 2010 • Presenter: Robin Hodson • Location: BSO Education Resource Center

Come and learn the industry standard music software for creating & editing all kinds of sound, MIDI data, music notation, film soundtracks, voiceovers and much more. Robin Hodson from Soundtree presents a brand new curriculum for teaching Pro Tools in education, with EASY TO LEARN tutorial movies, assignments, assessment and step-by-step guidance. Suitable for the beginner and the nervous. Learn how software like this will revolutionize the way you teach music and the creative potential of your students.

Interdisciplinary Curriculum

Applying Brain Research to Interdisciplinary Music Teaching: A Wolf, A Boy, and an Inventive-Retentive Mind

November 14 and 21, 2009 • Presenter: Sandra Nicolucci • Location: Symphony Hall

This two-part workshop is designed for general music and fine arts specialists as well as elementary classroom teachers who wish to embark together on an interdisciplinary and imagination-filled adventure which engages recent findings from neuroscience research. Participants will apply research to their work in reconstructing the familiar, timeless tale of *Peter and the Wolf*. Through guided imagery, composing, creative writing, cooperative group work, singing, and acting, participants will see new potential for incorporating creativity and imagination into their curricula. This hands-on workshop is designed to engage participants deeply in imaginative thinking — a modality much demanded by the 21st Century Skills movement. Participants will leave with concrete ideas for fashioning a vibrant new unit on a very traditional topic.

African Drumming: Technique, Pedagogy, and Program Implementation in the School Setting

February 27, 2010 • Presenter: Jeremy Cohen and Nani Agbeli

Location: Symphony Hall (*Please note: this workshop will be held 9am–5pm*)

Join internationally acclaimed Ghanaian master dancer and drummer Nani Agbeli and pioneering composer, educator and percussionist Jeremy Cohen for a fun, innovative, and practical ALL-DAY workshop on classroom techniques to teach African drumming, dancing and singing. Topics include traditional songs from Ghana, connections between drumming, dancing and singing, and alignment with core curriculum. Don't miss out on this rare opportunity to learn about West African drum-and-dance music from Mr. Agbeli, a renowned native practitioner, and Mr. Cohen, a top-flight educator with proven success at implementing these indigenous traditions in the American classroom setting. Sign up today!

Exploring the Vocal Music of African Americans

March 27, 2010 • Presenter: Pamela Wood • Location: Symphony Hall

Through Zoltán Kodály's teachings, we're reminded that the genre of folk song is worth preserving. Why? Because it reflects a people's history! Dress comfortably for this workshop so you'll be prepared to "let your backbone slip"! Get ready to play African-American singing games and sing the folk songs. We'll learn about four principal folk song types found in the African-American canon, and we'll consider principles of character that have been taught throughout African-American history. Selected hand-outs will be provided. Texts and song collections for further study will be suggested and/or available for purchase.

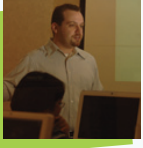


All-day workshop!

AFRICAN DRUMMING A rare opportunity to learn about West African drum-and-dance music from a renowned native practitioner.



Presenters



JAY DORFMAN is an Assistant Professor in the Music Education department at Boston University, where he teaches classes in music technology, instrumental methods, and graduate foundations. He has a PhD from Northwestern University, and BM and MM degrees in music education from the University of Miami in Coral Gables, Florida. Dr. Dorfman is a regular lecturer at state music education conferences throughout the country, and specializes in the development of curriculum in music technology for learners of all levels.



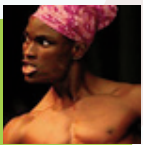
ROBIN HODSON is the Mid-Atlantic Manager for Soundtree, based in Baltimore, Maryland. An accomplished composer and performer, working in a variety of differing genres, he is also a recording engineer, songwriter and arranger. He was with Sibelius/Avid for 13 years, and trained universities and schools all over the US and Canada on how to use Avid music technology products, before joining Soundtree in the summer of 2009. He has authored several free quick start guides on how to use and learn Sibelius, Groovy Music and Pro Tools, and is writing a curriculum for using Pro Tools at the high school level.



Having received degrees from Boston University's School of Fine and Applied Arts and School of Education, DR. SANDRA NICOLUCCI'S teaching and administrative career was centered for 35 years in area public school systems until her recent retirement in 2005. Currently she is an Associate Professor of Music Education in the College of Fine Arts at Boston University, where she oversees undergraduate music education studies.



JEREMY COHEN is a Boston-based composer, educator and percussionist who holds a B.A. from the University of California, Berkeley and an M.M. from the New England Conservatory of Music. He studied traditional Ewe drumming and dancing in the West African country of Ghana, recently leaving his post as Music Director at the Umana Middle School in East Boston to found ThisWorldMusic, a consultancy firm with the mission to give educators and young people the tools they need to bring the joy and power of African drumming into their classrooms.



Internationally acclaimed Master Dancer NANI KWASHI AGBELI is a native of the Volta Region of Ghana. He is the son of celebrated Master Drummer Godwin Agbeli, former principal drummer for the Ghana National Ballet. An active performer and clinician, the younger Mr. Agbeli has worked with adults and schoolchildren throughout Wisconsin, where he currently resides, and has for years been a fixture in the Dance Department at the University of Wisconsin at Madison. During the summertime, he is a revered dance instructor at the Dagbe Cultural Center in his native village of Kopeyia, Ghana.



PAMELA WOOD is a native of Richmond, VA, and serves as Senior Lecturer in Music at MIT and on the faculties of the Summer Institute for Contemporary Performance Practice and the Kodály Music Institute at NEC. She has appeared as soprano soloist with the Boston, Chicago, New York, San Francisco, London and Israel Philharmonic Orchestras. She is an active clinician in solfège, the art songs of African-American composers, and folk song research; and a member of the Pi Kappa Lambda National Music Honor Society since 1967. Her achievements are cited in Marquis' *Who's Who* publications.

2009-2010 Professional Development Workshops

WORKSHOP	DATE	NO. OF PEOPLE	COST/PERSON	TOTAL
SIBELIUS FOR BEGINNERS	11/7/09		\$75	
APPLYING BRAIN RESEARCH	11/14, 11/21/09		\$125	
INTERMEDIATE SIBELIUS	12/5/09		\$75	
LIFE FOR MUSIC TEACHERS	2/6/10		\$75	
AFRICAN DRUMMING	2/27/10		\$125	
PRO TOOLS FOR MUSIC EDUCATORS	3/6/10		\$75	
VOCAL MUSIC OF AFRICAN AMERICANS	3/27/10		\$75	
			GRAND TOTAL	

COMPLETE AND RETURN THIS FORM TO:

Boston Symphony Orchestra
 Department of Education and Community Programs
 301 Massachusetts Avenue
 Boston, MA 02115

OR FAX FORM TO: 617-425-8679

- Enclosed is my check made out to the **Boston Symphony Orchestra.**

NAME _____

ADDRESS _____

CITY _____ STATE _____ ZIP _____

Please charge the full amount to:

TELEPHONE (DAY) _____ (EVENING) _____

- American Express
 Visa
 MasterCard
 Diners Club
 Discover Card

EMAIL _____

SCHOOL/TOWN _____

CARD NUMBER _____ EXP. DATE _____

NAME (AS IT APPEARS ON CARD) _____

SIGNATURE _____

617-638-9373 • ecgonzalez@bso.org

BOSTON SYMPHONY ORCHESTRA

Symphony Hall

301 Massachusetts Avenue

Boston, Massachusetts 02115-4511