

January 2010



Did you Know?

- The average computer left on all day uses nearly 1000 kilowatt hours of electricity a year, producing more than a ton of carbon emissions.
- If only 50% of America's computers used Computer Power Management, we'd save enough electricity to light 8 million homes, reduce 6 million tons of CO² and remove 1 million cars from the road.
- Screen savers can use an additional 42 watts at minimum; those with 3D graphics can use nearly three times as much!

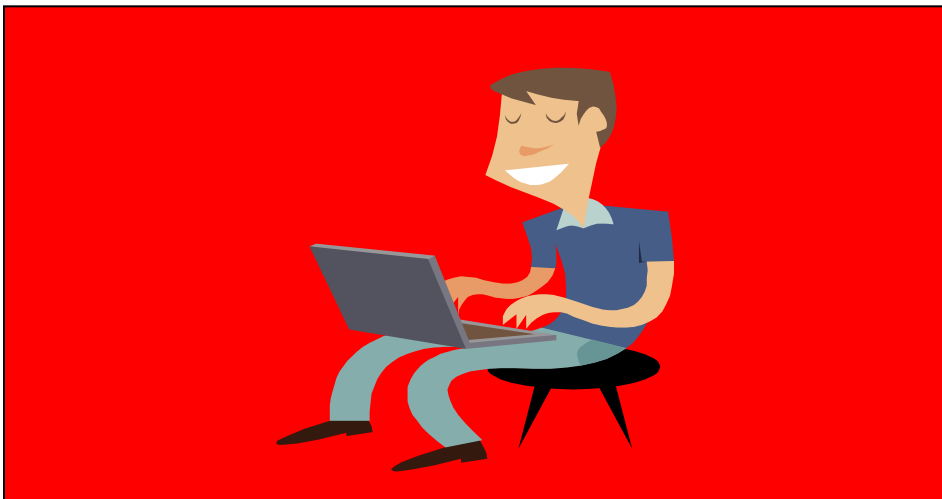


This Month's Green Thought:

"Walking more is good for the earth, but it's good for you, too. Eating lower on the food chain means you'll live longer. Turning off the TV and playing leapfrog will make you laugh. So take a deep breath, knuckle down... Fight the good fight rather than whimper in the corner, and be joyful. And help preserve this wonderful gift of life on Earth for yourself, your friends, your kids and my grandchildren. Everyone will be glad you did."

- Professor David Sobel, Antioch University

Turn off those computers please!



New Year, New Habits!

You can use your computer most efficiently by employing these energy saving tips:

- Use Power Management settings to put your computer and your monitor into low power sleep mode after a pre-determined period of inactivity. Most people choose the Low Power options after 15 or 30 minutes of inactivity. This can save you \$20 to \$70 per year. Simply touching the mouse or keyboard "wakes" the computer and monitor in seconds.
- Using your computer's Power Management options, set your PC to either *Standby* or *Hibernate* mode. Either setting will save you \$10 to \$50 in annual energy costs. PCs in Standby mode wake up a bit more quickly, but setting your PC to Hibernate offers the additional benefit of saving your work in the event of power loss. To enable "Hibernate" settings, simply go to your Control Panel, click on "Power Options," and set your PC to "Hibernate" after a specified time (most recommend 30 minutes).
- To maximize power savings, EPA recommends setting monitors to enter sleep mode after 5 to 20 minutes of inactivity and setting computers to enter system standby or hibernate after 30 to 60 minutes of inactivity. And if you use a laptop, be sure to activate these settings in the AC power profile - not just the DC (battery power) profile.
- By setting your computer to "hibernate" overnight, you save almost as much energy as you do turning it off. But it is always best to be in the habit of shutting computers and other electronic equipment off when you are done with them. What's more, leaving a PC on constantly can actually cause its fans to pull more dust and dirt into your computer. So always shut off your computer to save energy and protect the life of your computer.

Brought to you by:

nationalgrid

The power of action.™

Contact Us:

If you have any questions, please contact the Andrews at 781 393-2228. You may also contact the event chair, Timothy Blake, principal @ tblake@medford.k12.ma.us